



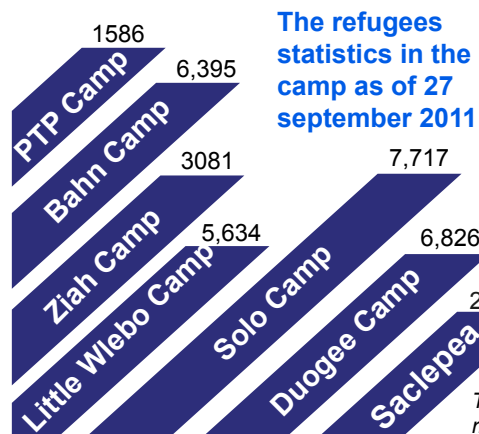
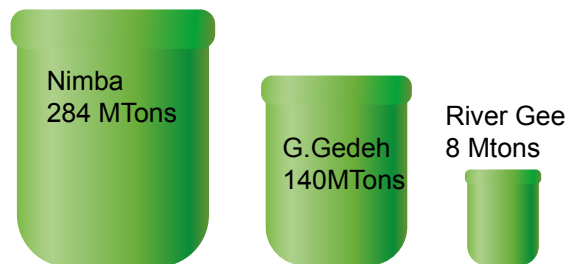
The total number of refugees in Liberia currently stands at **178,163** with **76,331** in Grand Gedeh, **53,838** in Nimba, **36,103** in Maryland, **11,530** in River Gee and **361** in Montserrado.

The agricultural response to the refugee crisis include **rice production, Vegetable and Cassava production and Fisheries.**

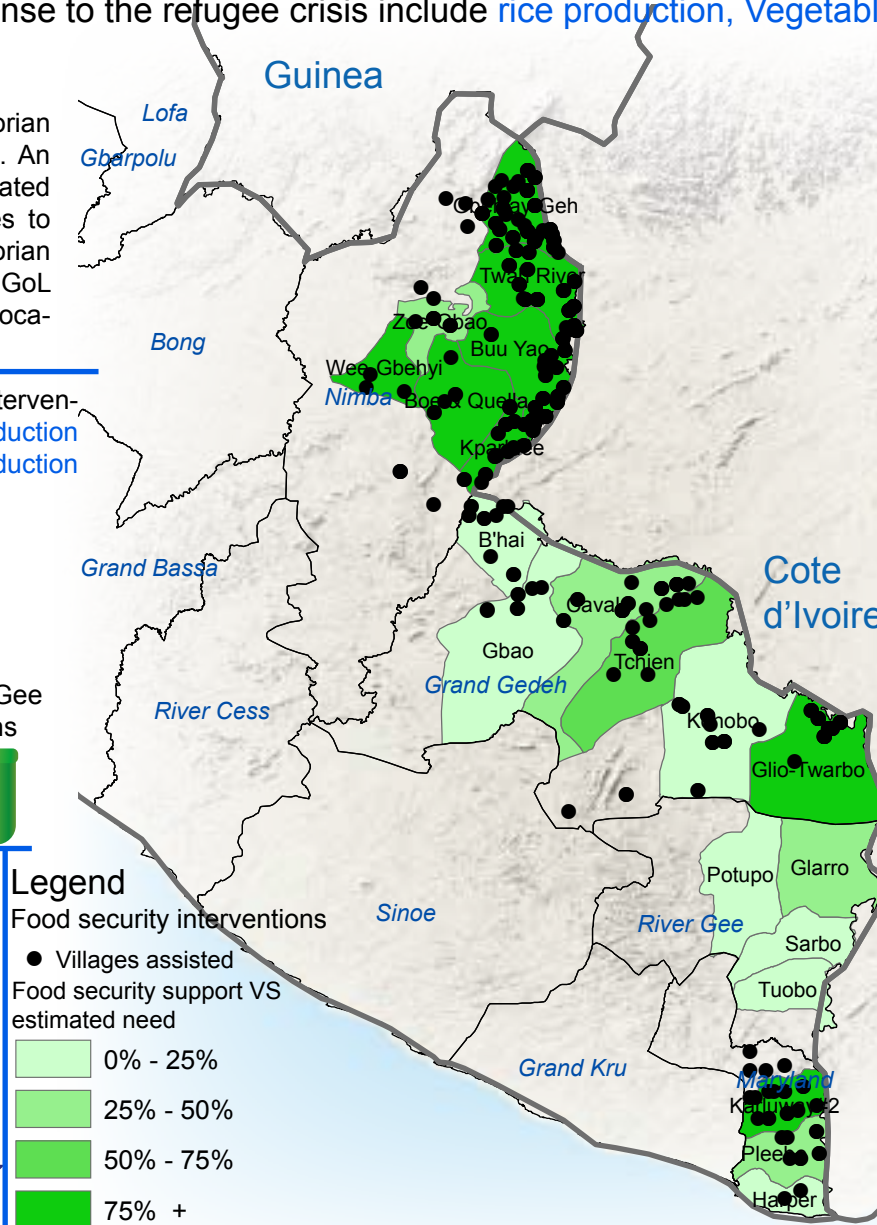
**Refugee statistics:** Over 178,163 Ivorian refugees are currently registered in Liberia. An estimated 33,500 live in seven designated refugee camps, while the majority continues to reside in 230 communities near the Ivorian border. According to a recently launched GoL relocation plan, 80,000 refugees are to be relocated to refugee camps by the end of 2011.

The number of beneficiaries of agricultural interventions for the refugees crisis are : **1. Rice production (19,400 HHs) , 2. Vegetable & Cassava production (13,800 HHs), 3. Fisheries (590HHs).**

### Total estimated seed distributed



**The refugees statistics in the camp as of 27 september 2011**



**Legend**

Food security interventions

- Villages assisted

Food security support VS estimated need

- 0% - 25%
- 25% - 50%
- 50% - 75%
- 75% +

The boundaries and names shown and the designations used on this map do not imply official endorsement or acceptance by the United Nations. Source: FAO, OCHA, UNHCR. Snapshot 011 OCHA Liberia.

**Refugees' background:** The vast majority of Ivorian refugees arriving in Liberia are farmers. Interventions aimed at improving the lives and livelihoods of refugees should include an agriculture component. In addition to producing food where it is most needed, agricultural support works do empower beneficiaries and create self-sustainability, while diminishing dependence on food aid

Total estimated area planted as part of the various rice production programmes (average 25kg seed/acre).

Area Covered (acres)*	Nimba	G. Gedeh	R. Gee	Total
Lowland	5,520	4,166	-	9,686
Upland	5,858	1,449	300	7,607
<b>Total</b>	<b>11,378</b>	<b>5,308</b>	<b>300</b>	<b>17,293</b>

**Social integration continue between Host community and refugees.** Liberian host families have been providing shelter and generously sharing food with refugees since the onset of the crisis. This has led to an early depletion of food stocks. Considering the likely event of a protracted refugee crisis in Liberia, it is pertinent to continue investing in refugee and host families' ability to grow more and nutritious food through agricultural support

**Organisations implementing emergency programmes in agriculture:** ARS, Caritas, Concern, CRS, DRC, FAO, GAA, IEDA, Oxfam, Red Cross Mov, Samaritan's Purse, SARA, SERE, Vision in Action.